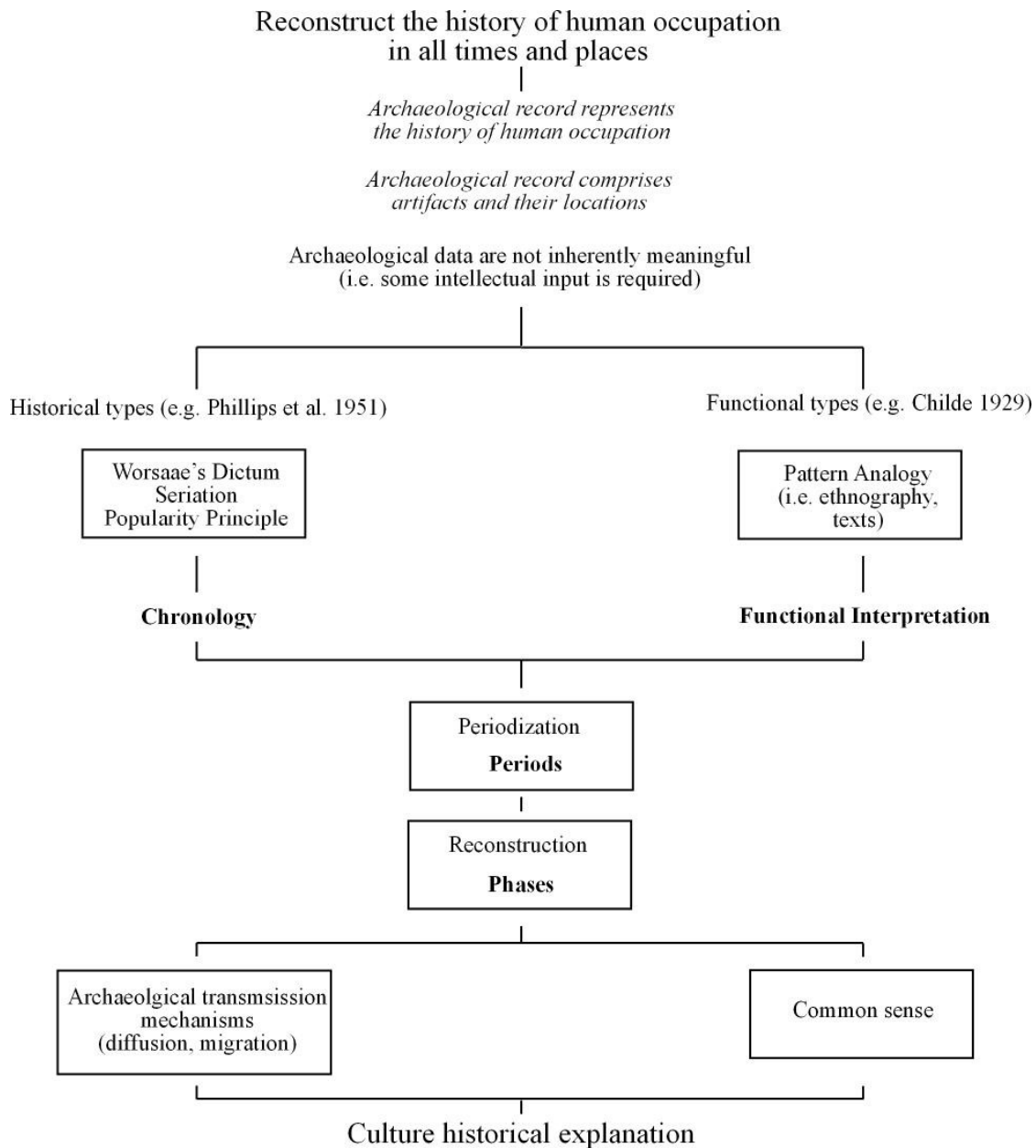


## THE STRUCTURE OF CULTURE HISTORICAL ARCHAEOLOGY



This diagram is a schematic representation of culture historical archaeology beginning with the discipline's goals and ending with its desired product. Some of the unquestioned assumptions are italicized. Boxed elements represent theory functions and bold items are the largely (but not solely) extant relevant publications of culture historical archaeology. Two routes of intellectual input are shown, although these are often combined in single explanations.

### References and Sources:

- Childe, V. G. 1929. *The Danube in Prehistory*. Oxford: The Clarendon Press.
- Phillips, P., J. A. Ford, and J. B. Griffin. 1951. *Archaeological Survey in the Lower Mississippi Valley, 1940-1947*. Vol. 25. *Papers of the Peabody Museum of Archaeology and Ethnology*. Cambridge: Harvard University.
- Dunnell, R. C. 1986. "Methodological Issues in Americanist Artifact Classification," in *Advances in Archaeological Method and Theory*, vol. 9. Edited by M. B. Schiffer, pp. 149-207. New York: Academic Press.
- Lyman, R. L., M. J. O'Brien, and R. C. Dunnell. 1997. *The Rise and Fall of Culture History*. New York: Plenum Press.
- Wiley, G. R., and P. Phillips. 1958. *Method and Theory in American Archaeology*. Chicago: University of Chicago Press.